



## Project Purpose

The purpose of the F.E. Everett Turnpike Improvement Project is to improve transportation efficiency and reduce safety problems associated with turnpike congestion in Nashua, Merrimack, and Bedford for all users of the Turnpike while being sensitive to the needs of local communities, residents, and natural and cultural resources.

## Public Informational Meetings

Public Invited

The New Hampshire Department of Transportation (NHDOT) is conducting Preliminary Engineering and Environmental Review of proposed improvements to three segments of the F.E. Everett Turnpike in Nashua, Merrimack, and Bedford. Three Public Informational Meetings are being held to present the project. Each meeting will begin with an Open House where the project will be graphically displayed for viewing and questions can be answered by the project team. A formal presentation will follow with opportunities for the public to ask questions.

**WHERE:** [BCTV Town Meeting Room](#)

10 Meetinghouse Road  
Bedford, NH

Open House 5pm-7pm

**WHEN:** March 29, 2018

Presentation 7pm

Live on Bedford Community Television beginning at 7pm

---

**WHERE:** [Nashua City Hall Auditorium](#)

229 Main Street  
Nashua, NH

Open House 5pm-7pm

**WHEN:** April 3, 2018

Presentation 7pm

---

**WHERE:** [Merrimack High School](#)

Cafeteria  
38 McElwain Street  
Merrimack, NH

Open House 5pm-7pm

**WHEN:** May 1, 2018

Presentation 7pm

## Project Need

The F.E. Everett Turnpike (FEET) is a principal north-south arterial highway within the State of New Hampshire and is part of the New Hampshire Turnpike System. The FEET begins at the state border with Massachusetts, where it is a continuation of US Route 3, and continues north 39.5 miles to Exit 14 in Concord. It includes portions of Interstates 93 and 293 and provides a vital link for north/south travel.

The FEET carries a mix of traffic including trucks, cars, and buses, as well as commercial traffic vital to the region's economy. The FEET corridor serves as a regional commuting route for residents of New Hampshire and Massachusetts as well as an important local route for the communities of Nashua, Merrimack, Bedford, and other surrounding municipalities. It also serves as an important link for New England-wide travel to population centers such as Nashua, Manchester, and Concord, as well as to tourist destinations such as the New Hampshire Lakes Region, White Mountains, and many ski areas. As one of the main arterials in the New Hampshire highway system, it is important to maintain the mobility of people, goods and services through this corridor.

## Capacity

Since the FEET was constructed in the 1950s and 1960s, many segments and interchanges have been widened and improved. This project focuses on certain segments that have not yet been improved. Traffic volumes on the FEET have grown substantially in recent years, resulting in frequent congestion and poor Levels of Service (LOS) on several road segments. (Level of Service is a measure of how well or poorly a roadway handles traffic volumes. LOS A represents free-flow conditions with no backups or delays, and LOS F represents extreme congestion with major delays.)

## Safety

Crash data compiled by the NHDOT for the years 2006 through 2016 show that the majority of crashes occurred during dry roadway conditions and were located near on-ramps and off-ramps, particularly at Exits 11 and 12 (in Merrimack) and the I-293 interchange (in Bedford). In addition, there are several locations that were not specifically located at ramp intersections where it appears that the geometry of the mainline segment, coupled with congested traffic conditions, are contributing factors to the higher incidence of crashes. As traffic volumes increase on the FEET, the geometric deficiencies will become more problematic and crashes will likely increase.

In recognition of these safety concerns, congestion, and deficiencies, the project has been included in the State's most recent Ten-Year Transportation Improvement Plan 2017-2026 for construction in years 2022 to 2026.

## Infrastructure

There are certain deficiencies in the current infrastructure that pose safety concerns. In at least one area, the roadway profile has a design speed lower than the currently posted speed limit. Bridges associated with the FEET also have structural and capacity deficiencies that need to be addressed, such as the Baboosic Lake Road over the FEET which is a State Red List bridge.



## MAJOR PROJECT ELEMENTS

The major elements of the project include:

- Widen three segments of the FEET from Nashua north to Bedford;
- Replace the FEET bridges over the Pennichuck Brook (Nashua/Merrimack);
- Rehabilitate bridge rail on the FEET bridge over Greeley Street / Continental Boulevard (Merrimack);
- Replace the Wire Road Bridge over the FEET (Merrimack);
- Replace the Baboosic Lake Road Bridge over the FEET (Merrimack);
- Replace the FEET bridge over Baboosic Brook (Merrimack);
- Stormwater treatment improvements throughout the project;
- Noise assessments; and
- Public participation.

## NHDOT Project Development Process

The project is currently in the Preliminary Design phase, during which project design alternatives will be developed and analyzed for impacts such as wetlands, water quality, noise, and other resources. At the conclusion of the analysis, a preferred design alternative will be identified. Environmental documentation will occur in the form of an Environmental Study. Preliminary Design will be complete when the preferred alternative is presented at a formal Public Hearing and the Environmental Study is approved.

After the completion of Preliminary Design, the next phase of the project will be Final Design, during which final engineering plans will be developed, right-of-way/easements will be acquired as needed, and construction contract documents will be prepared. Final Design is complete when the project is advertised for construction bids and is awarded to a contractor. The start of construction is based upon available funding, contractor schedule, and weather.



Looking North from Wire Road Bridge

## ENVIRONMENTAL RESOURCES

An Environmental Study that will be available for public review and comment is being prepared for the proposed project to assess the potential effects on the quality of the human and natural environment. This document will provide a comprehensive assessment of the potential resources and impacts associated with the proposed project. Below is a partial list of the resources that will be evaluated:

- Air Quality
- Hazardous Materials
- Surface Waters and Wetlands
- Floodplains
- Groundwater
- Conservation Lands
- Fisheries and Wildlife
- Noise
- Cultural Resources

Pennichuck Brook is the primary drinking water supply for Nashua and several surrounding communities. A variety of wetlands are present throughout the project corridor including rare species. Steps will be taken to avoid and minimize impacts to these important natural resources.

In addition, historic and archaeological resources are also being evaluated. A study is being conducted identifying structures over 50 years old that may be impacted by the project. An archaeological study is also being conducted to identify and attempt to avoid areas of archaeological sensitivity.

## PROJECT TEAM

**Wendy Johnson, P.E.**  
Project Manager, NHDOT  
603-271-2171  
wendy.johnson@dot.nh.gov

**David Smith, P.E.**  
Assistant Administrator  
Bureau of Turnpikes  
603-485-3806  
david.smith@dot.nh.gov

**William Ashford, P.E.**  
Principal Engineer  
CHA Companies, Inc.  
508-561-9149  
washford@chacompanies.com

**Michael Long, P.E.**  
Regional Office Manager  
McFarland-Johnson, Inc.  
603-225-2978  
mlong@mjinc.com

## Public Meetings

The NHDOT will hold a series of meetings with local officials, public agencies, transportation and transit agencies, private transportation providers and other stakeholders. A formal Public Hearing will also be held to present the preferred alternative. Check the project website for the next public meeting being held in your community.

## PROJECT SCHEDULE

<b>2016 - 2018</b>	Public Officials Meeting Develop Design Alternatives Research Environmental Resources
<b>2018</b>	Hold Public Informational Meetings Evaluate Design Alternatives Evaluate Environmental Impacts (wetlands, water quality, noise, etc.) Publish Environmental Study Public Hearing
<b>2018 - 2021</b>	Final Design Right of Way Acquisitions / Easements Environmental Permitting
<b>2022</b>	Anticipated Start of Construction



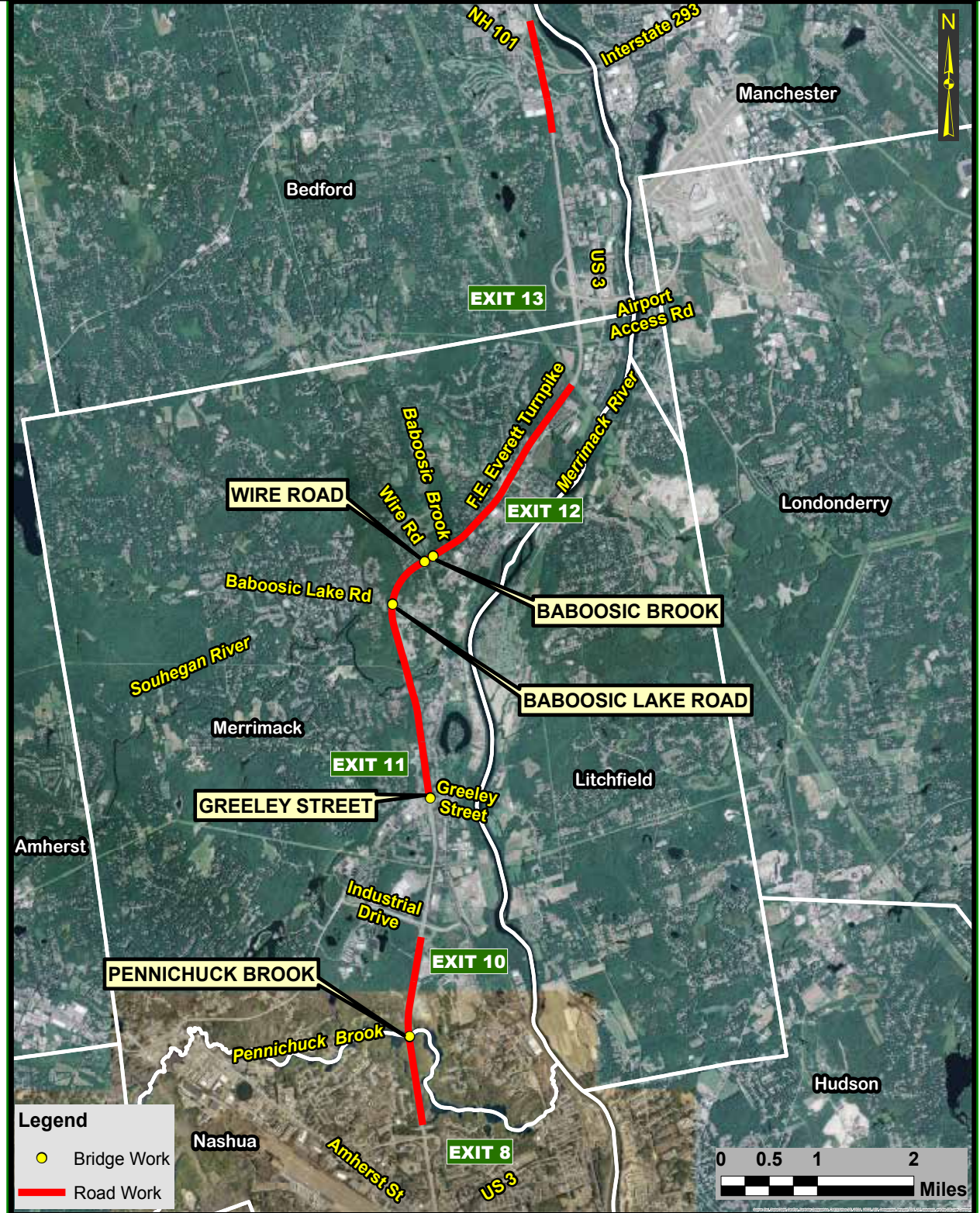
Looking North from FEET over the Pennichuck Brook

# F. E. Everett Turnpike Widening

March 2018

Nashua - Merrimack - Bedford, NH – State Project No. 13761

## PROJECT LOCATION



### Notes/Questions/Comments

**Name:** \_\_\_\_\_

**Contact Information:** \_\_\_\_\_

---

---

---

---

---

---

---

---

---

---

---

---

---

---

---

---

---

---

---

---

---

---

---

*We hope to see you at the Public Informational Meetings*